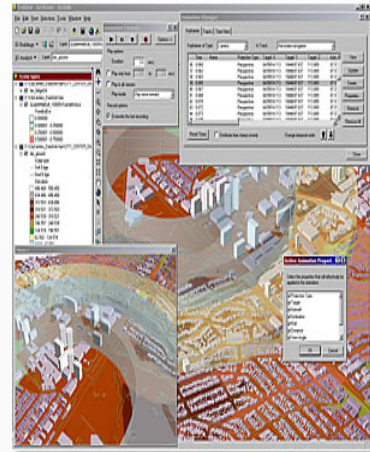
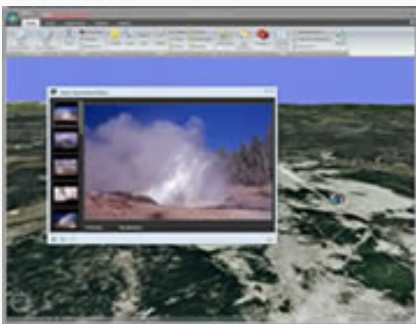


Geographic Information System (GIS)

- ◆ **nLogic** brings expertise with GIS to capture, store, manipulate, analyze, manage, and present various types of geographical data. We develop GIS applications that allow users to create interactive queries, analyze spatial information, edit data in maps, and present the results of all these operations. We generate GIS information to view, understand, question, interpret, and visualize data in many ways that reveal relationships, patterns, and trends in the form of maps, globes, reports, and charts.
- ◆ **nLogic** employs ArcGIS that provides a mechanism to explore, visualize, and share GIS information.



Capabilities:

- ◆ Access ArcGIS Online base maps and layers.
- ◆ Fuse local data with map services to create custom maps.
- ◆ Perform spatial analysis.
- ◆ Select basemaps such as World Imagery, World Streets, or World Topographic Maps.
- ◆ Add local data such as geodatabases, shapefiles, KML/KMZ, GPX, and raster formats (JPEG 2000, GeoTIFF, MrSID).
- ◆ Integrate 2D and 3D displays. View maps and globes in any projection or coordinate system.

Contact Information

Tim Thornton, CEO/President
tim.thornton@nlogic.com

Joe Paschall, Vice President
joe.paschall@nlogic.com